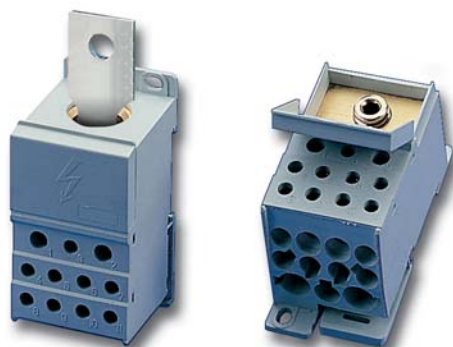


Distribution blocks

- Rigid copper bars
- Insulated flexible copper bars
- Busbar supports
- Mechanical systems software
- **Distribution blocks**
- Power terminals
- BLOCAL aluminium systems
- Mounting rails and profiles



repair_008_a_1_cat



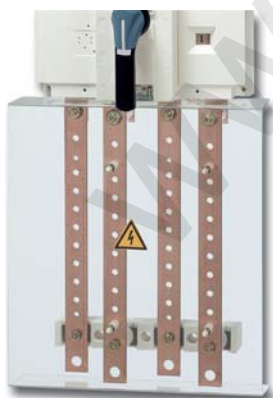
repair_028_a_1_cat



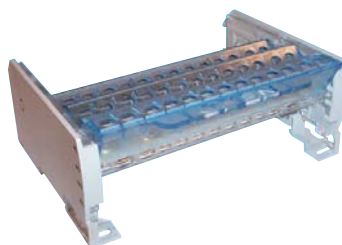
repair_013_a_1_cat



repair_027_a_1_cat



repair_020_b_1_cat



repair_038_a_1_cat



repair_030_a_1_cat

barre_006_a_1_cat



Functions

SOCOMEK **distribution blocks** allow easy connection of conductors. They are installed downstream of a switch, a commutator or a fuse-combination switch.

Conformity to standards

- IEC 60439-1
- EN 60439-1
- NF C 20455

General characteristics

- Insulating voltage:
 - ferrules terminal distribution block: 500 V,
 - modular row terminal distribution block: 690 V,
 - wire-terminal distribution block: 1000 V.
- Impulse voltage:
 - ferrules terminal distribution block: 6 kV,
 - modular terminal distribution block: 6 kV,
 - wire-terminal distribution block: 8 kV.
- Self-extinguishing: 960°C.

The range

- 7 from 80 to 630 A in 1, 2, 3 and 4 pole ratings.
- 2 connection modes:
 - direct or ferrules,
 - cable lugs.

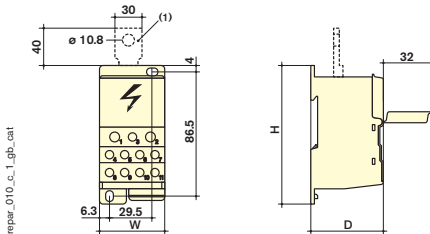


► **Direct or cable connection**

• **Unipolar distribution blocks**



IP20 direct or cable connection distribution blocks which can be clipped onto a symmetric DIN rail.



References

Rating (A)	Dimensions W x H x D	Icc (kA eff)	References
80	47 x 66 x 27	1.9	5410 1008
125	46 x 74 x 27	4.4	5410 1012
175	42.5 x 71 x 45	11	5410 1017
250	44.5 x 96 x 50	21	5410 1025
400	44.5 x 96 x 50	21	5410 1040

Connections

Rating (A)	Power supply section (mm ²)	No. of phases per section (mm ²)
80	< 16	4 x 6 + 2 x 16
125	< 35	6 x 2.5 to 16
175	16 ... 70	10 x 2.5 to 16
250	35 ... 120	2 x 25 + 5 x 16 + 4 x 10
400	95 ... 185	2 x 25 + 5 x 16 + 4 x 10

Accessories

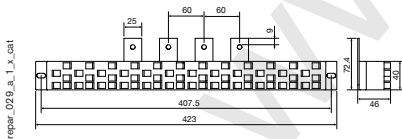
Description of accessories	References
Assembly kit for rating 250 A ⁽¹⁾	5410 0025
Assembly kit for rating 400 A ⁽¹⁾	5410 0040

(1) Linking part enabling direct assembly on the connecting lugs of the switching device.

• **Row distribution blocks**



IP20 direct or cable connection distribution blocks which can be clipped onto a symmetric DIN rail.



References

Rating (A)	Length	With plug and cable ⁽¹⁾	Icc (kA eff)	References
250 ⁽²⁾	1 row	yes	10	5420 2426
250 ⁽²⁾	1 row	no	10	5421 2426

(1) Delivered with special 6 mm².

L = 120 mm: 12 black plugs, 12 blue plugs.

(2) Preferably the terminations will be distributed over the entire number of terminals.

Cables

Rating (A)	Type	Length (mm)	Colour	Pack qty	References
40	6 mm ² cable	120	Blue	10	5421 1006
40	6 mm ² cable	120	Black	10	5421 1016
40	6 mm ² cable	320	Blue	10	5421 1106
40	6 mm ² cable	320	Black	10	5421 1116
63	10 mm ² cable	320	Blue	10	5421 1101
63	10 mm ² cable	320	Black	10	5421 1111
40	connector for 2.5 mm ² cable	-	-	20	5421 0025
63	connector for 6 mm ² cable	-	-	20	5421 0125

Connection

- 12 three pole/four pole connections.
- 24 single phase connections.
- Maximum current = 63 A.

Distribution blocks

- Rigid copper bars
- Insulated flexible copper bars
- Busbar supports
- Mechanical systems software
- **Distribution blocks**
- Power terminals
- BLOCAL aluminium systems
- Mounting rails and profiles

► **Direct or cable connection**

• **Monoblock multipolar distribution block**



repar_039_a_1_cat



repar_039_b_1_cat

References

Rating (A)	No. of poles	Dimensions H x W x D (mm)	References
125	4 P	98 x 74.5 x 45	5410 4112
175	3 P	80 x 71.5 x 42.5	5410 3017

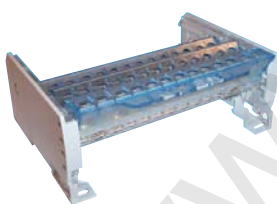
Connections

Rating (A)	No. connections per section (mm ²)
125	Phase: 5 x 1 to 6 + 2 x 1.5 to 10 / Neutral: 6 x 1.5 to 10 + 4 x 1.5 to 6
175	6 x 2.5 to 16

• **Bridge multipolar distribution block**

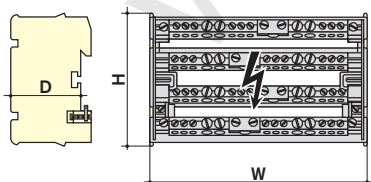


repar_027_a_2_cat



repar_038_a_2_cat

IP20 direct or cable connection distribution blocks, which can be clipped onto a symmetric DIN rail.



repar_009_a_1_gp_cat

• **Earth bar**



barre_006_a_2_cat



barre_012_a_1_cat

References

Rating (A)	No. of poles	No. connections per section (mm ²) ⁽¹⁾	Dimensions H x W x D (mm)	I _{cc} (kA rms) ⁽²⁾	References
125	4 P	2 x 25 + 7 x 10	85 x 88 x 48	3	5420 4108
125	4 P	2 x 25 + 2 x 16 + 9 x 10	85 x 129 x 48	4.2	5420 4112
160	4 P	1 x 35 + 3 x 25 + 8 x 16	90 x 160.5 x 50	6.2	5420 4016

(1) Maximum section of flexible cable.
 (2) Short circuit withstand (rms value) 1 second.

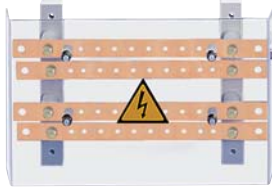
References

Mounting	No of feeders per section (mm ²)	Material	L (mm)	Pack qty	References
2 vis M4	10 x 16 + 2 x 35	brass	120	10	5414 0120
2 vis M6	41 x 16 + 2 x 35	brass	470	10	5414 0470



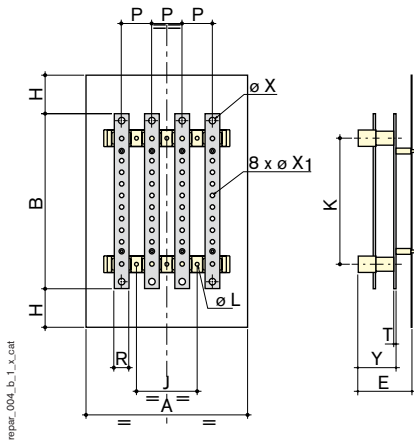
► Terminal connections

• Multipolar distribution blocks



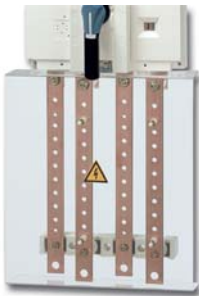
Terminal connections distribution blocks with front protection cover against direct contact.

repr_007_b_1_cmt



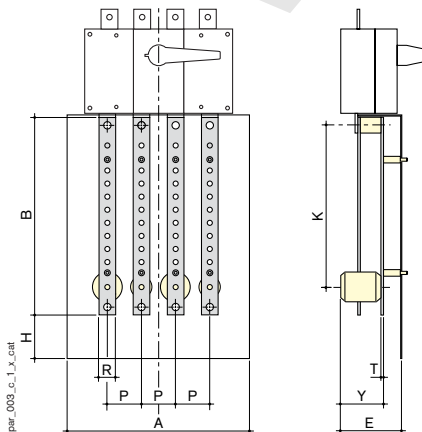
repr_004_b_1_x_cmt

• SIRCO multipolar distribution blocks



Terminal connections distribution blocks with front protection cover against direct contact (breaking device not supplied).

repr_020_b_2_cmt



repr_003_c_1_x_cmt

References

Rating (A)	No. of poles	Icc (kA rms)	No of feeders per section (mm ²)	References
160	3 P	10	2 x 95 + 8 x 25	5412 3016
160	4 P	10	2 x 95 + 8 x 25	5412 4016
250	3 P	15	2 x 150 + 8 x 50	5412 3025
250	4 P	15	2 x 150 + 8 x 50	5412 4025
400	3 P	21	2 x 240 + 8 x 95	5412 3040
400	4 P	21	2 x 240 + 8 x 95	5412 4040
630	3 P	21	2 x 300 + 8 x 150	5412 3063
630	4 P	21	2 x 300 + 8 x 150	5412 4063

Dimensions

Rating (A)	No. of poles	A	B	E	H	J	K	ØL	P	R	T	ØX	ØX ₁	Y
160	3 P	154	286	73	46.5	158	207	6.5	36	20	4	9	6	54
160	4 P	190	286	73	46.5	158	207	6.5	36	20	4	9	6	54
250	3 P	210	307	83	57.5	50	222	7	50	25	4	11	8	56
250	4 P	260	307	83	57.5	100	222	7	50	25	4	11	8	56
400	3 P	281	375	116	82.5	65	270	8	65	32	5	14.5	8.5	82
400	4 P	346	375	116	82.5	130	270	8	65	32	5	14.5	8.5	52
630	3 P	271	438	117	90.5	65	333	8	65	40	6	14.5	10.5	83
630	4 P	346	438	117	90.5	130	333	8	65	40	6	14.5	10.5	83

References

Rating (A)	No. of poles	Icc (kA rms)	No of feeders per section (mm ²)	References
160	3 P	10	1 x 95 + 8 x 25	5411 3016
160	4 P	10	1 x 95 + 8 x 25	5411 4016
250	3 P	15	1 x 150 + 8 x 50	5411 3025
250	4 P	15	1 x 150 + 8 x 50	5411 4025
400	3 P	21	1 x 240 + 8 x 95	5411 3040
400	4 P	21	1 x 240 + 8 x 95	5411 4040
630	3 P	21	1 x 300 + 8 x 150	5411 3063
630	4 P	21	1 x 300 + 8 x 150	5411 4063

Dimensions

Rating (A)	No. of poles	A	B	E	H	K	P	R	T	Y
160	3 P	154	286	73	46.5	261.5	36	20	4	54
160	4 P	190	286	73	46.5	261.4	36	20	4	54
250	3 P	210	307	83	57.5	279	50	25	4	56
250	4 P	260	307	83	57.5	279	50	25	4	56
400	3 P	281	375	116	82.5	340	65	32	5	82
400	4 P	346	375	116	82.5	340	65	32	5	82
630	3 P	271	438	117	90.5	410.5	65	40	6	83
630	4 P	346	438	117	90.5	410.5	65	40	6	83

Distribution blocks

- Rigid copper bars
- Insulated flexible copper bars
- Busbar supports
- Mechanical systems software
- **Distribution blocks**
- Power terminals
- BLOCAL aluminium systems
- Mounting rails and profiles

► Terminal connections

- Multipolar distribution blocks for FUSERBLOC and SIRCO VM2



repar_013_a_2_cmt

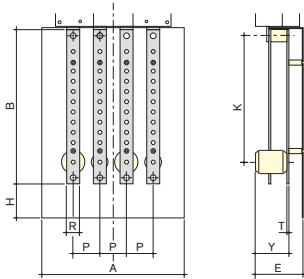
References

Rating (A)	Fuse size	No. of poles	Device	No of feeders per section (mm ²)	References
100/125/160	22x58 / 00	3 P	Fuserbloc	10 x 16 + 2 x 35 + 3 x M6	5413 3016
100/125/160	22x58 / 00	4 P	Fuserbloc	10 x 16 + 2 x 35 + 3 x M6	5413 4016
160	0	3 P	Fuserbloc	10 x 16 + 2 x 35 + 3 x M6	5413 3017
160	0	4 P	Fuserbloc	10 x 16 + 2 x 35 + 3 x M6	5413 4017
250	1	3 P	Fuserbloc	11 x M8	5413 3025
250	1	4 P	Fuserbloc	11 x M8	5413 4025
400	2	3 P	Fuserbloc	11 x M8	5413 3040
400	2	4 P	Fuserbloc	11 x M8	5413 4040
160/200		3 P	Sirco VM2	10 x 16 + 2 x 35 + 3 x M6	5413 3020
160/200		4 P	Sirco VM2	10 x 16 + 2 x 35 + 3 x M6	5413 4020

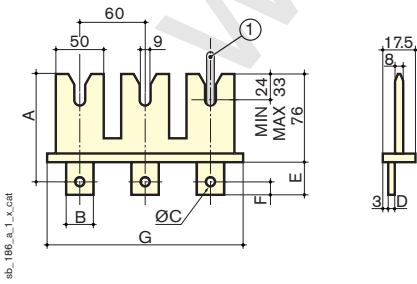
Dimensions

Rating (A)	No. of poles	Device	A	B	E	H	K	P	R	T	Y
100/125/160	3 P	Fuserbloc	110	260	61	20	233	36	20	4	39
100/125/160	4 P	Fuserbloc	145	260	61	20	233	36	20	4	39
160	3 P	Fuserbloc	150	260	61	20	233	50	20	4	39
160	4 P	Fuserbloc	200	260	61	20	233	50	20	4	39
250	3 P	Fuserbloc	185	340	67	15	300	60	32	5	45
250	4 P	Fuserbloc	245	340	67	15	300	60	32	5	45
400	3 P	Fuserbloc	210	340	67	15	300	66	32	5	45
400	4 P	Fuserbloc	275	340	61	15	300	66	32	5	45
160/200	3 P	Sirco VM2	142	260	61	20	233	27.5	20	4	39
160/200	4 P	Sirco VM2	142	260	61	20	233	27.5	20	4	39

repar_041_a_1_x_cmt



- Plug-in unit for 5 to 6.3 mm bars



1. Dropper busbar with a thickness of 5 to 6.3 mm.

ab_186_a_1_x_cmt

References

Rating (A)	No. of poles	Icc (kA rms)	References
125/160	3 P	65	3699 3P16
125/160	4 P	65	3699 6P16
250/400	3 P	65	3699 3P39
250/400	4 P	65	3699 6P39
630/800	3 P	65	3699 3P80
630/800	4 P	65	3699 6P80

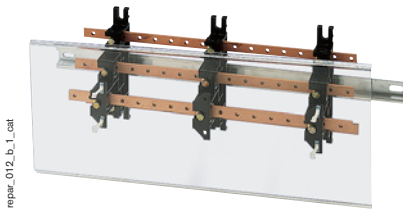
Dimensions

Rating (A)	No. of poles	A	B	C	D	E	F	G
125/160	3 P	99	20	M8	3	23	10	186
125/160	4 P	99	20	M8	3	23	10	248
250/400	3 P	101.5	25	M10	4	28	12.5	186
250/400	4 P	101.5	25	M10	4	28	12.5	248
630/800	3 P	101.5	25	M10	4	28	12.5	186
630/800	4 P	101.5	25	M10	4	28	12.5	248



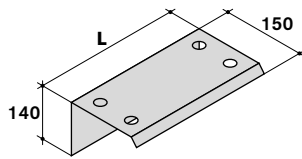
► Terminal connections

• Stair type multipolar distribution blocks

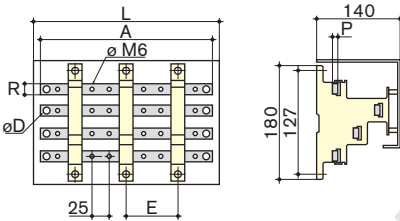


repr_012_b_1_cat

Stair type distribution blocks with threaded holes. Can be clipped onto a symmetric DIN rail. Factory assembled and supplied without protection cover.

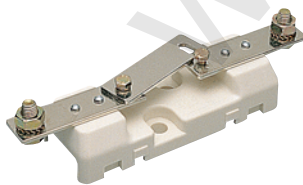


ab_043_b_1_x_cat

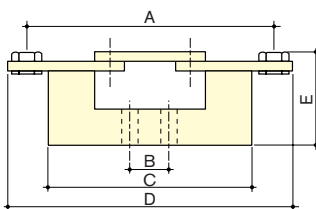


repr_040_a_1_x_cat

• Disconnectable solid neutral links



repr_030_a_2_cat



shun_012_a_1_x_cat

References

Rating (A)	L (mm)	No. of poles	Icc (kA rms)	No. of supports	Distribution blocks	Protection cover
					References	References
160	270	4 P	25	2	5028 0421	5028 0411
160	420	4 P	17	2	5028 0451	5028 0412
160	620	4 P	20	3	5028 0471	5028 0413
250	270	4 P	30	2	5028 0423	5028 0411
250	420	4 P	22	2	5028 0453	5028 0412
250	620	4 P	18	3	5028 0473	5028 0413
400	270	4 P	24	2	5028 0425	5028 0411
400	420	4 P	21	2	5028 0455	5028 0412
400	620	4 P	13	3	5028 0475	5028 0413

Accessories

Type	Pack qty	Reference
Spacer for protection cover	1	5028 0415

Dimensions

Rating (A)	No. of feeders	A	ØD	E	L	P	R
160	9	250	8	150	270	5	15
160	15	400	8	300	420	5	15
160	21	600	8	250	620	5	15
250	9	250	10	150	270	5	20
250	15	400	10	300	420	5	20
250	21	600	10	250	620	5	20
400	8	225	12	150	270	5	32
400	14	375	12	300	420	5	32
400	20	620	12	250	620	5	32

References

Rating (A)	Connection type	References
160	Direct or cable connection	NB10 0000
160	Terminal connections	NB16 0000
250	Terminal connections	NB25 0000
400	Terminal connections	NB40 0000
630	Terminal connections	NB63 0000

Dimensions

Rating (A)	A	B	C	D	E	Max. width (mm)
160	111	25	86	117	32	32
160	111	25	86	117	44	32
250	150	25	120	172	45	32
400	175	25 ⁽¹⁾	151	200	60	55
630	175	25 ⁽¹⁾	151	200	60	55

(1) Offset fixing holes.