

COUNTIS E20 / E21

Active energy meter and concentrator

NEW



3-phase - 63 A direct

⇒ Function

The **COUNTIS E2x** is an electrical energy meter designed for three-phase networks. It is used for direct connections up to 63 A.

⇒ Applications

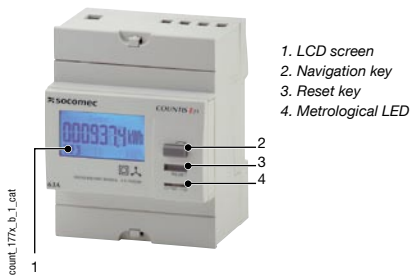
The **COUNTIS E20** is a totalising meter allowing direct reading of the power consumed, using a pulse output. A partial meter with reset allows the energy to be metered over a specific period.

The **COUNTIS E21** also offers the option of taking two different invoice tariffs into account. In this case, two partial meters are available.

⇒ Conformity to standards

- IEC 62053-21 class 1
- IEC 61557-12

➔ Front panel

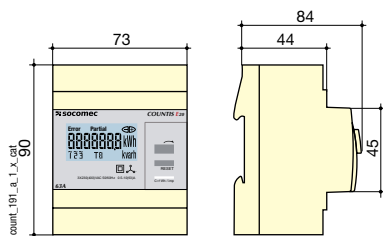


➔ Electrical Characteristics

Current measurement	
Type	3-phase - 63 A direct
Input consumption	0.8 VA max. per phase
Overload	30 x I _{max}
Sustained overload	63 A
Minimum measured current	40 mA
Voltage measurement	
Range of measurement	230 ... 400 V +/- 20%
Consumption on inrush (VA)	2 VA max.
Sustained overload	280 V
Energy accuracy	
Active (according to IEC 62053-21)	Class 1

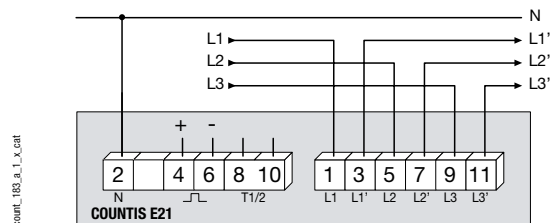
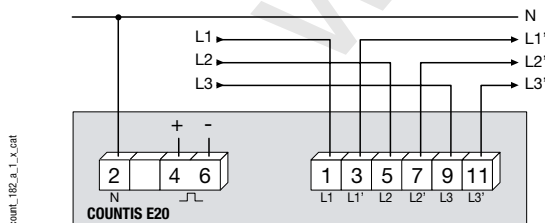
Input supply	
Self-supply	Yes
Frequency	50/60 Hz
Output (pulsed)	
Number	1
Phototransistor type	IEC 62053-31 Class A
Fixed weight of impulses	100 Wh
Impulse duration	100 ms
Operating conditions	
Operating temperature	-10 to 55°C °C
Storage temperature	-20 to 70°C °C
Relative humidity	85 %

➔ Case



Type	Modular
Number of modules	4
Dimensions W x H x D	73 x 90 x 84 mm
Case protection rating	IP20
Front protection rating	IP50
Display type	Backlit LCD display
Rigid cable connection section	1.5 to 16 mm ²
Flexible cable connection section	1 to 16 mm ²
Weight	245g

➔ Terminals and connections



➔ References

Type	COUNTIS E20 Reference	COUNTIS E21 Reference
63 A direct - 3-phase	4850 3003	
63 A direct - 3-phase - Dual tariff		4850 3004